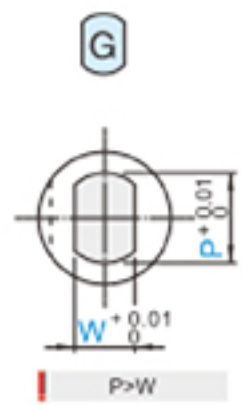
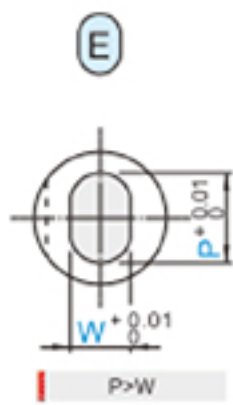
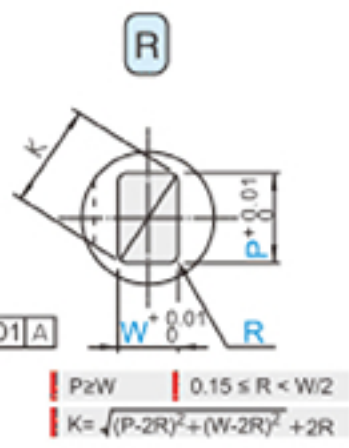
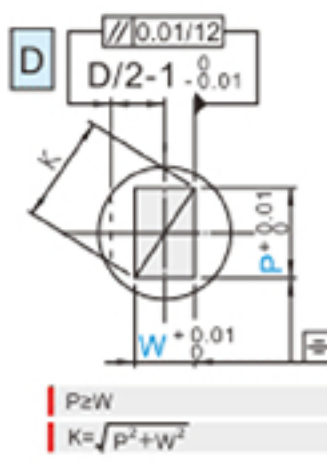
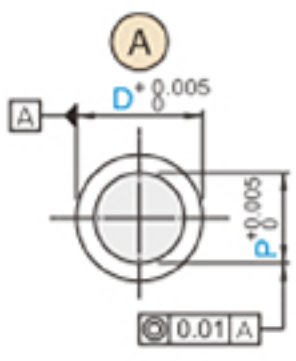
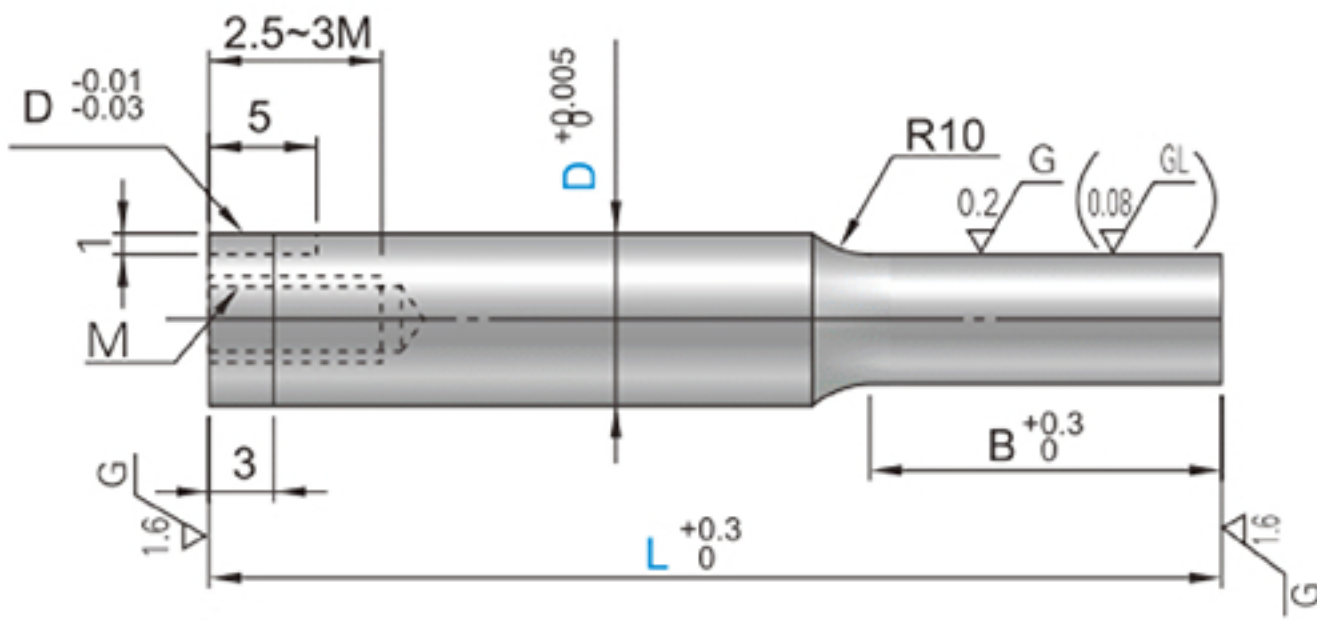





A-WWMP  
 A-WWXMP  
 AL-WWMP  
 AL-WWXMP  
 -TICN  
 AH-WWMP  
 AH-WWXMP



D	Material	HRC	Type			Surface Finish	Catalog No.
			A-WWMP A-WWXMP	AL-WWMP AL-WWXMP	TICN AH-WWMP AH-WWXMP		(B) (L>S)
D (+0.005/0)	V30(HIP)	88-89HRA 90-92HRA	A-WWMP A-WWXMP	AL-WWMP AL-WWXMP	AH-WWMP AH-WWXMP	A D R E G	S L



 **ORDER** Catalog No. - L - P - W - R (R)  
 A-WWMPAS10 - 80 - P7.770

Catalog No.		D	L	(A)	(D)	(E)	(R)	(G)	(R)	B	M
Type				P	P-Kmax.	P-Wmin.	R				
(D <sup>+0.005</sup> ) A-WWMP A-WWXMP (D5-8)		5	40 · 50 · 60 · 70	2.000~ 4.999	—	—	0.15	—	—	8	3
		6		2.000~ 5.999	5.97	1.50					
		8		3.000~ 7.999	7.97	2.00					
		10		3.000~ 9.999	9.97	2.50					
		13		6.000~12.999	12.97	3.00					
AL-WWMP AL-WWXMP (D5-8)		16	(40) · 50 · 60 · 70 · 80	10.000~15.999	15.97	4.00	W/2	—	—	13	5
		5		2.000~ 4.999	—	—					
		6		2.000~ 5.999	5.97	2.00					
		8		3.000~ 7.999	7.97	2.50					
		10		3.000~ 9.999	9.97	2.50					
-TiCN AH-WWMP AH-WWXMP (D5-8)		13	50 · 60 · 70 · 80	6.000~12.999	12.97	3.00	(R)	—	—	19	6
		16		10.000~15.999	15.97	4.00					
		5		2.000~ 4.999	—	—					
		6		2.000~ 5.999	5.97	2.00					
		8		3.000~ 7.999	7.97	2.50					
		60 · 70 · 80	10.000~15.999	15.97	4.00				25		

Ⓜ L(40) \*\*\*B=8

■ Coating punch feature:

1. TiCN-coated punches are PVD coatings for punches, which can improve the hardness and wear resistance of the cutting edge and increase the service life of the punches. It is the abbreviation of "Titanium carbonitride".
2. It can correspond to the sheet material with tensile strength above 270MPA, and it is a material with higher strength that the punch can process.

■ Using Features :

1. It is widely Apply to mould manufacturing and processing industries.
2. You can choose SKD11, SKH51, powder high speed steel two or three base materials to deal with various stamping conditions
3. The diameter of the punch rod has two tolerances of m5 and 0~+0.005, which can correspond to different matching methods.

